

RESOLUTION NO. 1109

A RESOLUTION establishing a ten minute time limit for one parking space on Northeast 3<sup>rd</sup> Avenue between Birch Street and Adams Street and two spaces on Northeast 4<sup>th</sup> Avenue between Everett Street and Franklin Street.

WHEREAS, CMC 10.08.010, allows the City Council from time to time to impose parking time limits for designated streets and locations within the city; and

WHEREAS, the parking time limits for Northeast 3<sup>rd</sup> Avenue between Birch and Adams and Northeast 4<sup>th</sup> Avenue between Everett and Franklin is currently two hours, and

WHEREAS, the Council desires to change the parking time limit for three spaces from two hours to ten minutes; and

NOW, THEREFORE, BE IT RESOLVED BY THE COUNCIL OF THE CITY OF CAMAS AS FOLLOWS:

Section I

The parking time limit for the eastern most space on the north side of Northeast 3<sup>rd</sup> Avenue between Birch and Adams Street is changed from two hours to ten minutes from 9:00 a.m. to 6:00 p.m., on all days except Sundays and legal holidays. The parking space is more particularly shown in Exhibit "A", attached hereto and by this reference incorporated herein.

Section II

The parking time limit for two spaces on the south side of Northeast 4<sup>th</sup> Avenue between Northeast Everett and Northeast Franklin is changed from two hours to ten minutes between the hours of 9:00 a.m. and 6:00 p.m. on all days except Sundays and legal holidays. The two parking spaces are depicted on Exhibit "B", attached hereto and by this reference incorporated herein.


Section III


The City Engineer is directed to erect signs giving notice of the new time limits.

Section IV


This Resolution shall be effective upon the erection of new signs by the City Engineer.

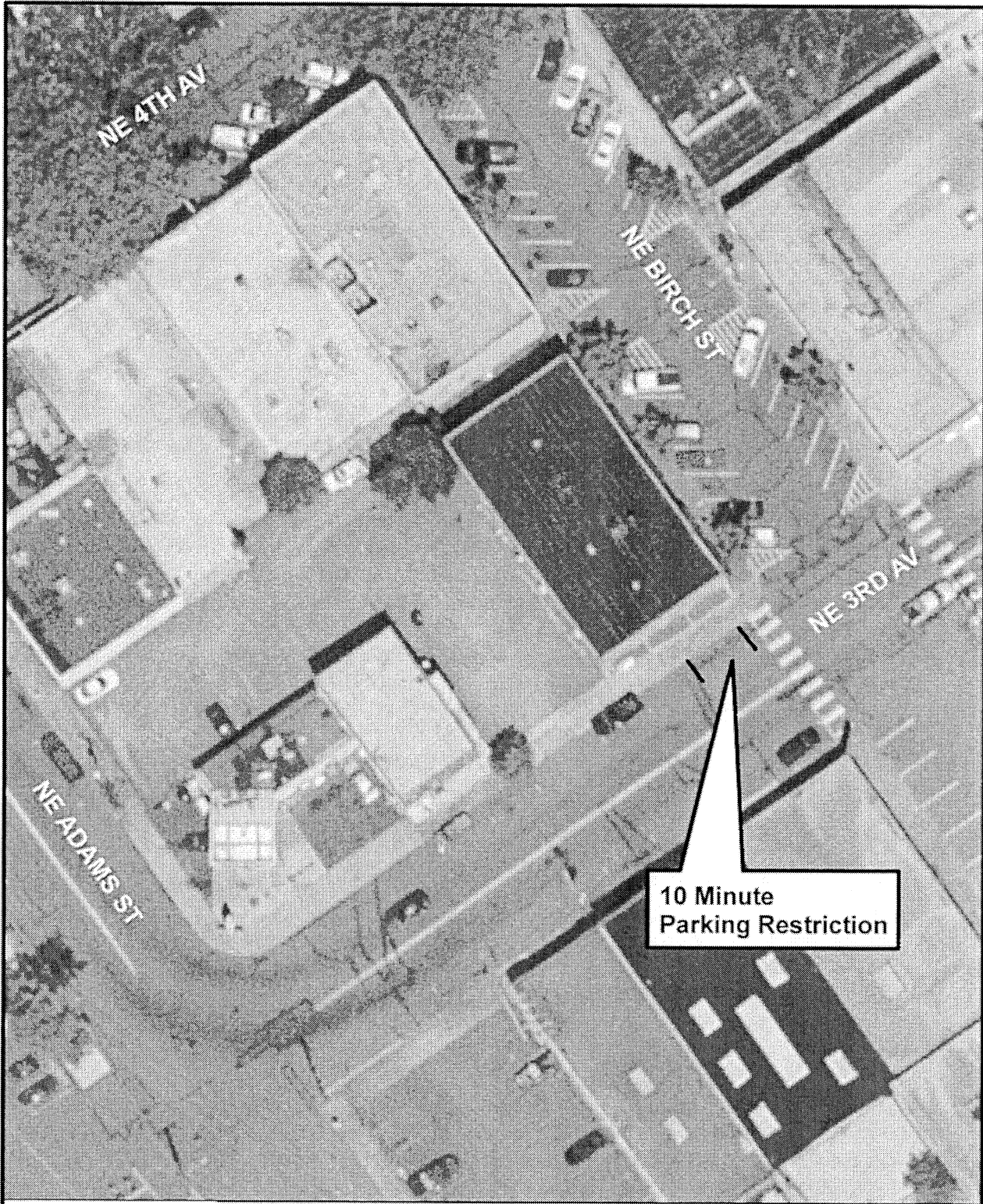
ADOPTED at a regular session of the Council of the City of Camas, this 16<sup>th</sup> day of July, 2007.

SIGNED:   
Mayor

ATTEST:   
Clerk

APPROVED as to form:

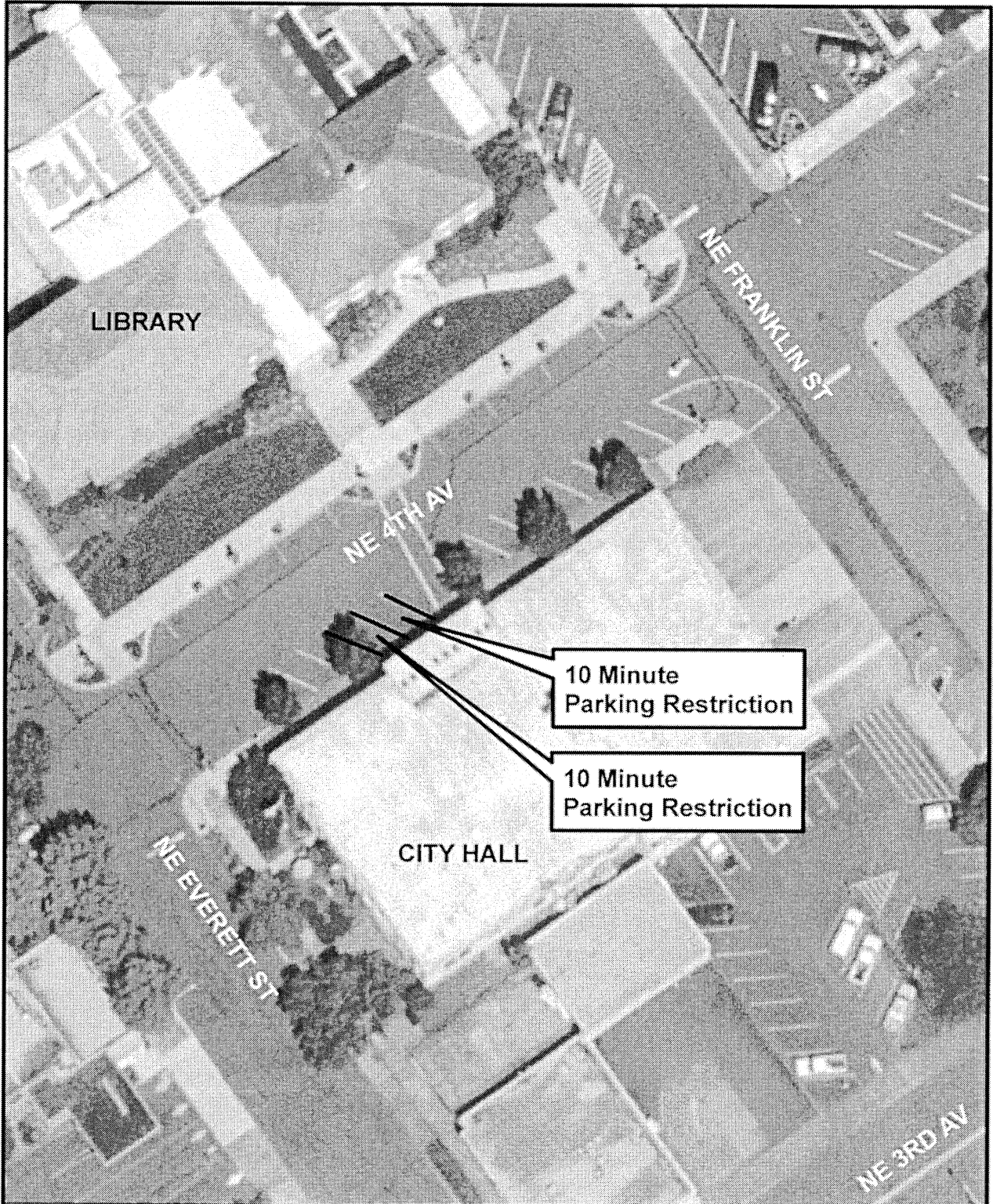
  
City Attorney  
David H. Schultz



1 inch equals 50 feet

CITY OF CAMAS  
PROPOSED 10 MINUTE  
PARKING RESTRICTION  
ON NE 3rd AVENUE





1 inch equals 50 feet

CITY OF CAMAS  
PROPOSED 10 MINUTE  
PARKING RESTRICTION  
ON NE 4th AVENUE

