

AFFIDAVIT OF PUBLICATION

STATE OF WASHINGTON, County of Clark—ss.

Milton Bona, being first duly sworn

on oath deposes and says that he is the Business Manager of The Camas Post-Washougal Record, a weekly newspaper. That said newspaper is a legal newspaper and it is now and has been for more than six months prior to the date of the publication hereinafter referred to, published in the English language continually as a weekly newspaper in Camas, Clark County, Washington, and it is now and during all of said time was printed in an office maintained at the aforesaid place of publication of said newspaper.

That the annexed is a true copy of Ordinance # 378, as it was published in regular issues (and not in supplement form) of said

newspaper once each week for a period of one consecutive weeks, commencing on the

15th day of Sept., 1933, and ending on the _____ day of _____, 19____, both dates inclu-

sive and that such newspaper was regularly distributed to its subscribers during all of said period. That the full amount of the fee charged for the foregoing publication is the sum of \$ 4.40

Milton Bona

Subscribed and sworn to before me this 22nd day of

September, 1933

Bruce Thurber

Notary Public in and for the State of Washington, Residing at Camas.

ORDINANCE NO. 378.
 On Ordinance providing for the vacation of Columbia Street from the easterly line of Plain Street to its intersection with Filmore Street and Coffey Street from the southerly line of Filmore Street to its intersection with Columbia Street, Cowan's Addition, Camas, Washington.
 The City Council of the City of Camas do ordain as follows:

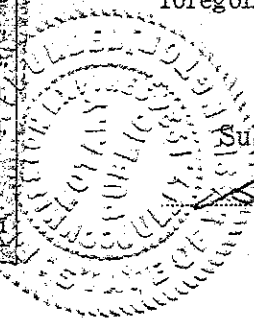
A petition having been presented to the Council of the City of Camas, signed by a majority of the property owners of property abutting on Columbia Street from the easterly line of Plain Street to its intersection with Filmore Street, and Coffey Street from the southerly line of Filmore Street to its intersection with Columbia Street, Cowan's Addition to the City of Camas, Washington and notice of hearing thereon having been duly posted for the required length of time, and this matter coming on to be heard this 22nd day of August, 1933, at 3 p. m. at the Council Chamber in the City Hall, Camas, Washington, and there having been no objections made to said vacation, and it appearing that petitioners are the owners of a majority of the property abutting on said streets and that it will be for the best interests of the City of Camas to vacate the same.

It is hereby ordered that Columbia Street be vacated from the easterly line of Plain Street to its intersection with Filmore Street, and Coffey Street from the southerly line of Filmore Street to its intersection with Columbia Street, Cowan's Addition to Camas, Washington, and the same is now vacated and reverts to the abutting property owners.

II.
 This ordinance shall be in full force and take effect five days from and after its passage by the Council, its approval by the Mayor, and its publication according to law.

Passed the first reading, August 22, 1933.
 Passed the second reading, August 22, 1933.
 Passed the third reading and adopted, September 12, 1933.
 Ayes: Farrell, Hall, Karnath, Rich, Lorenz, Province and Tidland.
 Noes: None.

Attest:
 W. E. FARR, City Clerk.
 W. SWANK, Mayor.



shers Su
of Rufus
ter, Mrs. L
r, Colorado,
Buckner's daug
A. Buckner d

100.00		900.00
300.00		600.00
500.00	250.00	850.00
100.00		100.00
30.00	50.00	638.00
		250.00
		100.00
50.00	100.00	150.00
150.00		150.00
	150.00	150.00
275.00	50.00	150.00

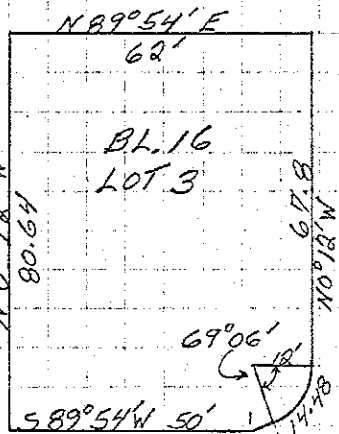
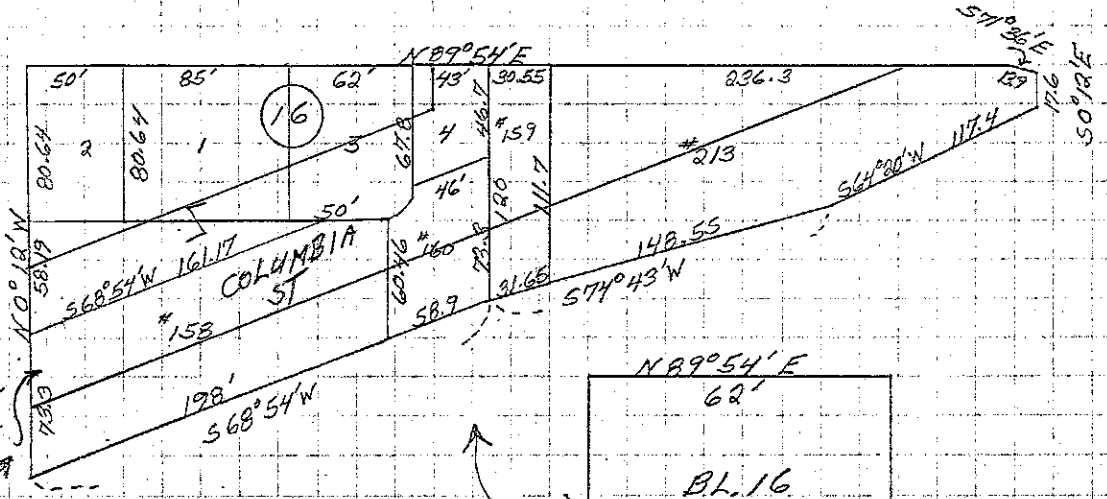
being first duly sworn
Business Manager
paper. That said news-
been for more than six

NE. EVERETT ST

NE. 14TH AVE.

NE. GARFIELD ST.

VACATION OF
COLUMBIA ST
1933
ORD. 378



NOTE:
NOT COLUMBIA
STREET
NE. 13TH AVE



1-19-77
RA

80410

COWANS ADD TO CAMAS #1 BLK 16

.14A

COWANS ADD TO CAMAS .14 #1 B15 BAAP 140 FT E OF NE
COR OF B 17 OF COWANS ADDN TO CAMAS TH E TO A PT 225
FT E OF SD NE COR TH S 80.64 FT THE W TO A PT S OF POB
TH N TO POB ALSO A PTN OF L B16 AND A PART IN A
VACATED PTN OF COLUMBIA ST IN COWANS ADD DAF BAAP N
89 DG 54 MIN E 90 FT TH S O DG 12 MIN E 80.64 FT FRM N
E COR OF B17 COWANS ADD TH FRM SD POB N 89 DG 54 MIN
E 151.59 FT TO A PT TH S 68 DG 54 MIN W 161.17 FT TO
A PT TH O DG 12 MIN W 58.19 FT TO PCB

80411

COWANS ADD TO CAMAS #2 BLK 16

.14A

COWANS ADD TO CAMAS #2 B16 .14 A PARCEL OF LAND IN
CITY OF CAMAS SD LAND BEING A PTN L 1 B16 AND A PART
BEING IN A VACATED PTN OF COLUMBIA ST ALL BING IN
COWANS ADDN TO CAMAS DAF BAAP N 89 DG 54 MIN E 90
FT FRM NE COR B17 COWANS ADD TO CAMAS TH FRM SD POB N
89 DG 54 MIN E 50 FT TO A PTH S O DG 12 MIN E 80.64
FT TH S 89 DG 54 MIN W 50 FT TH N 89 DG 12 MIN W
80.64 FT TO PLOB

80412

COWANS ADD TO CAMAS #3 BLK 16 .11A
COWANS ADD TO CAMAS #3 B16 APCL OF LAND DAF BAAP N
89 DG 54 MIN F 225 FT FROM NE COR OF B17 OF COWANS
ADD TO CAMAS TH FRM SD POR N89 DG 54 MIN E 62 FT TO A
PT TH S 0 DG 12 MIN E 67.8 FT TO A PT TH FOLG A 12 FT
RADIUS TO RT THRU 69 DEG 06 MIN 14.48 FT TO A PT TH S
68 DG 54 MIN W 4.6 FT TO A PT TH S 89 DG 54 MIN W
50 FT TH N 0 DG 12 MIN W 80.64 FTO BEG .11 A

80430

COWANS ADD TO CAMAS #4 BLK 16 INC VAC ST.

90970

#158 OF HJG MAXON DLC .31A

#158 OF HJG MAXON DLC .31A PTN LAND IN CTY OF CAMAS BEING UNPLAYED LAND IN MAXON DLC SEC 11 T1NR3E & A PTN OF PROP BEING IN VACATED PTN OF COLUMBIA ST IN COWANS ADD TO CAMAS & MORE PARTICULARLY DAF BAAPS 0 DG 12 MIN E A DIST OF 138.8 3 FT FRM NW COR OF FRACTNL B16 OF COWANS ADD TH FRM BEG PT N 68 DG 54 MIN E 210.84 FT TAP TH S 0 DG 12 MIN E 4.6 FT TAP TH IN A SWLY DIR ON A 12FT RADIUS CURVE TO RI THRU AN ANGLE OF 69 DG 06 MIN A DIST OF 14.5 FT TAP TH S 68 DG 54 MI W 4.6 FT TAP TH S 0 DG 12 MIE 60.46 FT TAP TH S 68 DG 54 MI W 198 FT TAP TH N 0 DG 12 MIW 73.3 FT TO PT OF BEG & CONTG .31A M/L

90971

#159 OF HJG MAXON DLC .08A

#159 OF HJG MAXON DLC .08A PTN LAND IN CAMAS BEING UNPLATD LAND IN MAXON DLC SEC 11 T1NR3E & A PTN OF SD PROP BEING VACATED PTN OF COLUMBIA ST & VACATED PTN OF COFFEE ST IN COWANS ADD TO CAMAS DAF BAAPN 89 DG 54 MIN E A DIST OF 240 FT FRM NW COR OF FRACTNL B16 OF COWANS ADD TO CAMAS TH FRM BEG PT N 89 DG 54 MIN E 30.55 FT TAP TH S 0 DG 12 MIN E 111.7 FT TAP TH S 74 DG 43 MIN W 31.65 FT TAP TH N 0 DG 12 MIN W 120 FT TO POB & CONTG .081A

90972

#160 OF HJG MAXON DLC .09A

#160 OF HJG MAXON DLC .09A PTN LAND IN CAMAS BEING UNPLATD
LAND IN HJG MAXON DLC IN SEC11 T1NR3E & A PTN OF SD PROP
BEING IN VACATED PTN OF COLUMBIA ST IN COWANS ADD TO CAMAS
DAF BAAP S 0 DG 12 MIN E A DIST OF 138.83 FT & N 68 DG 54
MIN E A DIST OF 210.84 FT FRM NW COR OF FRACTNL B16 OF
COWANS ADD TO CAMAS TH FRM SD BEG PT N 68 DG 54 MIN E 46 F
TAP TH S 0 DG 12 MIN E 73.3 FT TAP TH S 68 DG 54 MIN W 58.9
FT TAP TH N 0 DG 12 MIN W 60.46 FT TAP TH N 68 DG 54 MIN
E 4.6 FT TAP TH IN A NLY DIRON A 12 FT RADIUS CURVE TO LEFT
THRU AN ANGLE OF 69 DG 06 MIA DIST OF 14.5 FT TAP TH 0 DG
12 MIN W 4.6 FT TO POB & CONTG .09A W 96.3 FT TAP TH N

91010

#213 OF HJG MAXON DLC .42A

#213 OF HJG MAXON DLC .42A A PCL OF LAND IN CTY OF CAMAS
IN HJG MAXON DLC IN SEC 11 T1NR3E 1/4 MP DAF BAAP N 89 DG 54
MIN E A DIST OF 270.55 FT FRM NW COR FRACTNL B16 OF
COWANS ADD TO CAMAS TH FRM SD BEG PT N 89 DG 54 MIN E
230.3 FT TH S 71 DG 36 MIN E 13.9 FT TH S 0 DG 12 MIN E 17.6
FT TH S 64 DG 20 MIN W 117.4 FT TH S 74 DG 43 MIN W 148.55 F
TH N 0 DG 12 MIN W 111.7 FT TO POB INC PTN OF VACATED
COLUMBIA ST IN COWANS ADD