

ORDINANCE NO. 2630

AN ORDINANCE zoning the area annexed to the City of Camas by Ordinance 2629, and revising the Comprehensive Land Use Map of the City of Camas and the Zoning Map of the City of Camas.

WHEREAS, by Ordinance 2629, the City annexed a certain area more particularly described in said Ordinance to the City of Camas, and

WHEREAS, the City has heretofore adopted comprehensive land use designations for the annexed area, and

WHEREAS, the Planning Commission and City Council have conducted public hearings on zoning classifications for the annexed area,

NOW, THEREFORE, THE COUNCIL OF THE CITY OF CAMAS DO ORDAIN AS

FOLLOWS:

Section I

The annexed area shall be zoned in accordance with the map attached hereto as Exhibit "A" and by this reference incorporated herein. The City Engineer is directed to amend the Zoning Map of the City of Camas to include such property within the zoning classifications as shown in Exhibit "A".

Section II

This ordinance shall take force and be in effect five (5) days from and after its publication according to law.

PASSED by the Council and APPROVED by the Mayor this 7th day of November, 2011.

SIGNED:  _____
Mayor

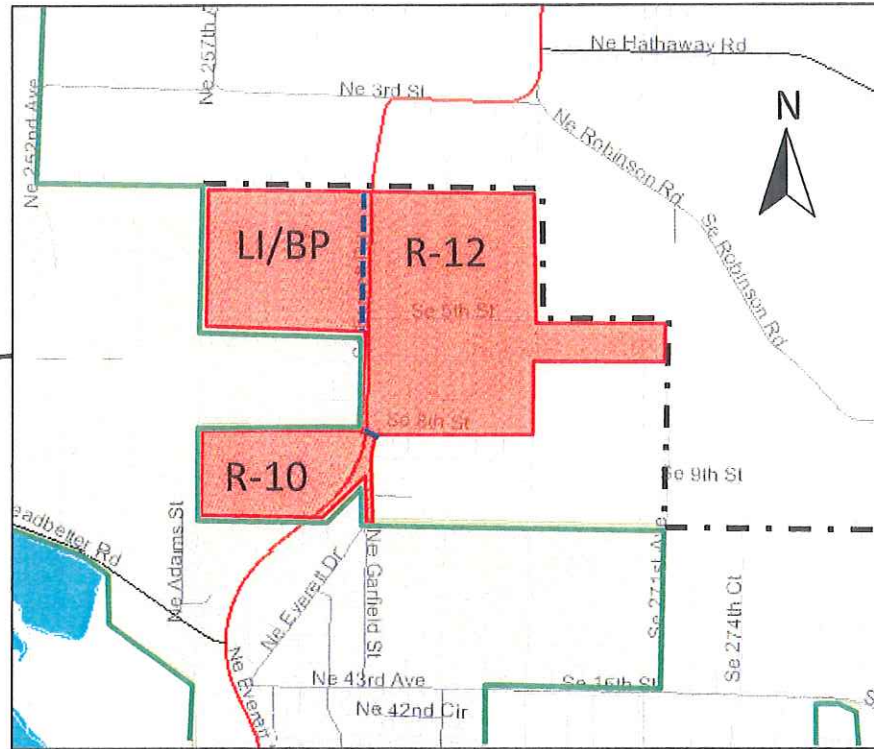
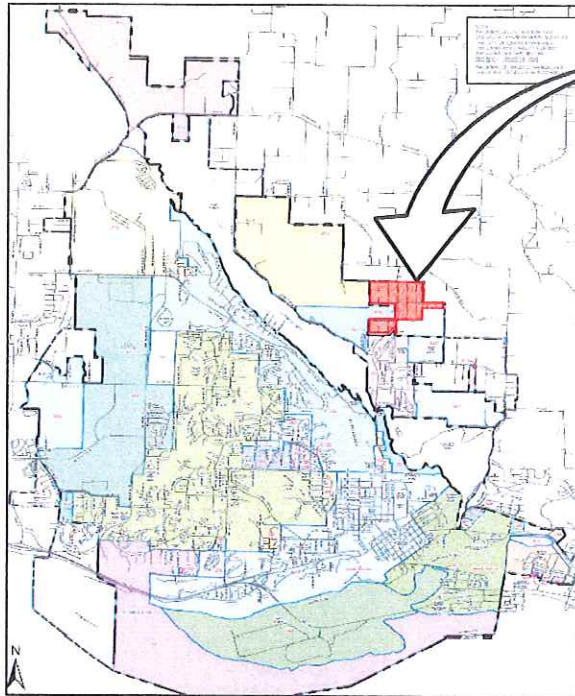
ATTEST:  _____
Clerk

APPROVED as to form:

 _____
City Attorney

G-4 North Annexation and Zoning

Camas, WA



SCALE 1" = 1160 FT.

- Annexation Boundary
- Existing City Limits
- - - Urban Growth Boundary