

RDA
 REGISTERED ARCHITECT
 REITER DESIGN ARCHITECT
 INCORPORATED

COLUMBIA RIVER HOMES DEVELOPMENT
 3210 SW 6TH AVENUE CAMAS, WASHINGTON

OWNER:
 TERRIE COX REVOCABLE LIVING TRUST
 16408 SE MILL PLAIN BLVD. VANCOUVER, WASHINGTON 98634

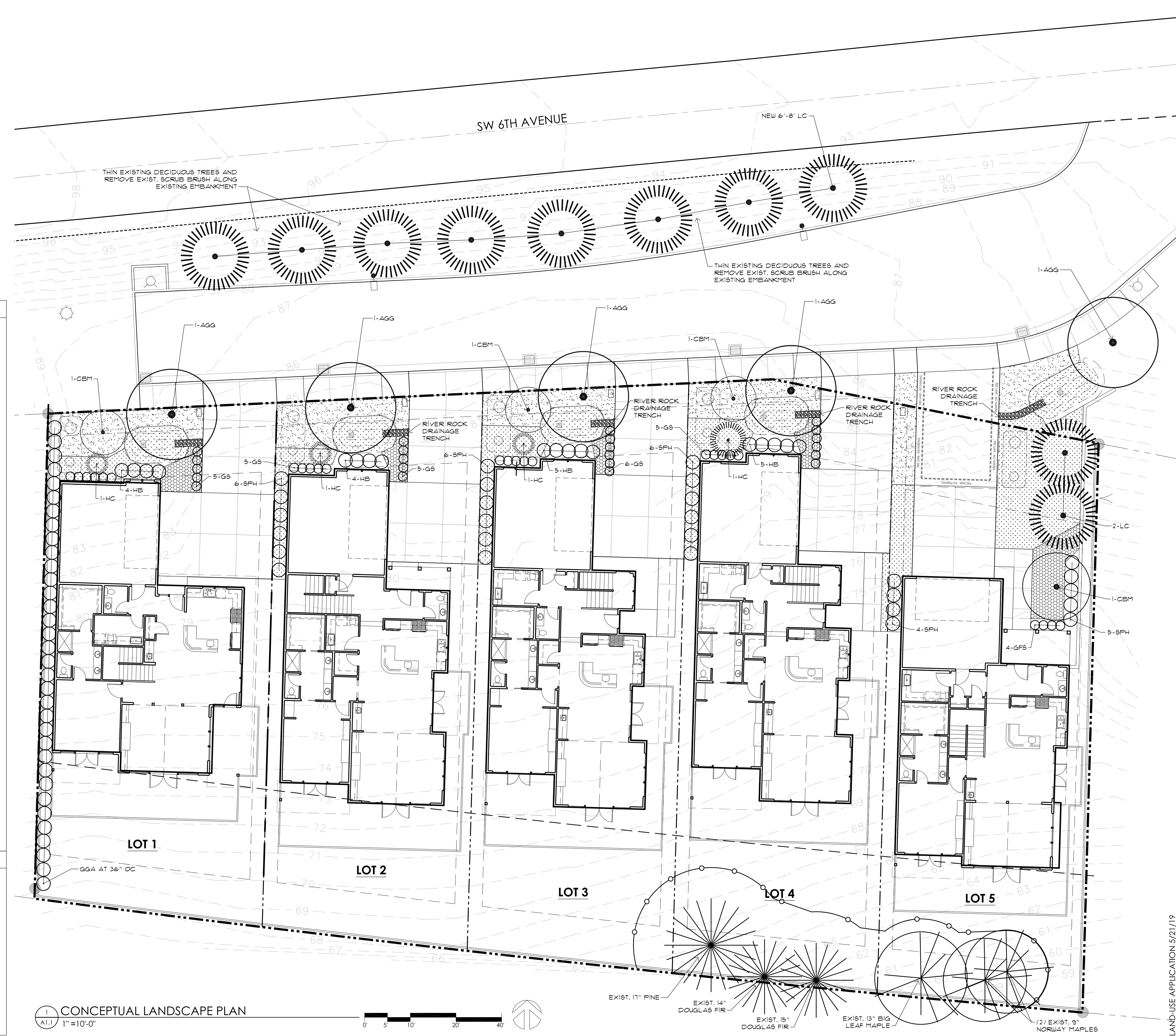
CONCEPTUAL LANDSCAPE PLAN

A
1.1

LAND-USE APPLICATION 5/21/19

date:	MAY 21, 2019	revisions:	
scale:	1"=10'	drawn:	SAR
job no.:	1709		

7965 SW CIRRIUS DRIVE BEAVERTON, OREGON 97008 (503) 574-5056



TREES	COMMON NAME	BOTANICAL NAME	SIZE/COND.	SPACING
AGG	Autumn Gold Ginkgo	<i>Ginkgo biloba 'Autumn Gold'</i>	2" Cal.	as shown
BG	Black Gum	<i>Nyssa sylvatica</i>	2" Cal.	30' o.c.
LC	Leyland Cypress	<i>Cupressus leylandii</i>	6'-8"	as shown
GVZ	Green Vase Zelkova	<i>Zelkova serrata 'Green Vase'</i>	2" Cal.	as shown
HC	Hinoki Cypress	<i>Chamaecyparis obtusa 'Gracilis'</i>	5'-6"	as shown
CBM	Carri Bark Japanese Maple	<i>Acer palmatum 'Sango-Kaku'</i>	12"-14" specimen	as shown
IC	Incense Cedar	<i>Calocedrus decurrens</i>	7'-8"	as shown
PFVM	Pacific Fire Vine Maple	<i>Acer circinatum 'Pacific Fire'</i>	6'-7" 3 stem min.	as shown
SAP	Swedish Aspen	<i>Populus tremula 'Erecta'</i>	2" Cal.	as shown
VC	Virescens Cedar	<i>Thuja plicata 'Virescens'</i>	2" Cal.	as shown

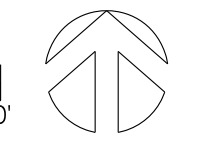
SHRUBS	COMMON NAME	BOTANICAL NAME	SIZE/COND.	SPACING
DY	Dense Yew	<i>Taxus densiformis</i>	24"-30" B&B	4' o.c.
FPHB	Firepower Heavenly Bamboo	<i>Nandina domestica 'Firepower'</i>	3 Gal.	2' o.c.
GFS	Goldflame Spirea	<i>Spiraea bumalda 'Goldflame'</i>	3 Gal.	3' o.c.
GGA	Green Giant Arborvitae	<i>Cultivar-thuja 'Green-Giant'</i>	6' min	4' o.c.
HB	Heavenly Bamboo	<i>Nandina domestica 'Stemma Sunrise'</i>	3 Gal.	3' o.c.
KA	Kaleidoscope Abelia	<i>Abelia x grandiflora 'Kaleidoscope'</i>	3 Gal.	3.5' o.c.
LF	Lalande Firethorn	<i>Pyracantha coccinea 'Lalande'</i>	5 Gal. Espaliered	6' o.c.
MW	Minuet Weigelia	<i>Weigelia florida 'Minuet'</i>	3 Gal.	4' o.c.
OG	Oregon Grape	<i>Mahonia aquifolium</i>	3 Gal.	3' o.c.
SPH	Sky Pencil Japanese Holly	<i>Ilex crenata 'Sky Pencil'</i>	3 Gal.	2' o.c.
SBV	Spring Bouquet Viburnum	<i>Viburnum tinus 'Spring Bouquet'</i>	5 Gal.	3.5' o.c.
SCC	Sixteen Candles Cierthra	<i>Arbutus unedo 'Compacta'</i>	3 Gal.	3.5' o.c.
SF	Sword Fern	<i>Polystichum multum</i>	3 Gal.	2.5' o.c.
SGPB	Sunjoy Gold Pillar Barberry	<i>Berberis thunbergii 'Mardi'</i>	3 Gal.	2' o.c.
SM	Strawberry Madrone	<i>Arbutus unedo 'Compacta'</i>	5 Gal.	5' o.c.
VRP	Valley Rose Pteris	<i>Pteris japonica 'Valley Rose'</i>	5 Gal.	5' o.c.

GROUND COVER	COMMON NAME	BOTANICAL NAME	SIZE/COND.	SPACING
CM	Cascades Mahonia	<i>Mahonia repens</i>	1 Gal.	12" o.c.
	Big Blue Lily Turf	<i>Liriope muscari 'Big Blue'</i>	4" Pot	12" o.c.
	Ice Dance Carex	<i>Carex morrowii 'Ice Dance'</i>	4" Pot	12" o.c.
	Loam			
	Japanese Spurge	<i>Pachysandra terminalis</i>	4" Pot	12" o.c.

GRASSES	COMMON NAME	BOTANICAL NAME	SIZE/COND.	SPACING
BOG	Blue Oat Grass	<i>Helictotrichon sempervirens</i>	1 Gal.	2' o.c.
FG	Fountain Grass	<i>Pennisetum alopecuroides 'Hameln'</i>	1 Gal.	2.5' o.c.
KFG	Karl Foerster Feather Reed Grass	<i>Calamagrostis arundifolia 'Karl Foerster'</i>	1 Gal.	3' o.c.

TREE DENSITY ANALYSIS	REQUIRED TREE DENSITY:	20 TREE UNITS/ACRE
SITE AREA:	0.65 ACRES = 13 TREE UNITS	
EXISTING TREES TO REMAIN:	17" PINE: 5 TREE UNITS	
	14" DOUGLAS FIR: 3 TREE UNITS	
	15" DOUGLAS FIR: 4 TREE UNITS	
TOTAL EXISTING:	12 TREE UNITS	
NEW TREES:	(5) AGG - 2" CALIPER: 5 TREE UNITS	
	(2) LC - 6' (2" CALIPER): 2 TREE UNITS	
	(4) CBM - 12'-14": 4 TREE UNITS	
TOTAL NEW TREES:	9 TREE UNITS	
TOTAL TREE UNITS PROVIDED:	21 TREE UNITS	

1 CONCEPTUAL LANDSCAPE PLAN
 A1.1 1"=10'-0"



K:\1709\Arch\1709_A11.dwg, 5/22/2019 6:03:30 PM