

RDA
 REITER DESIGN ARCHITECT
 INCORPORATED

7965 SW CIRRIUS DRIVE BEAVERTON, OREGON 97008 (503) 574-3056

COLUMBIA RIVER HOMES DEVELOPMENT
 3210 SW 6TH AVENUE CAMAS, WASHINGTON

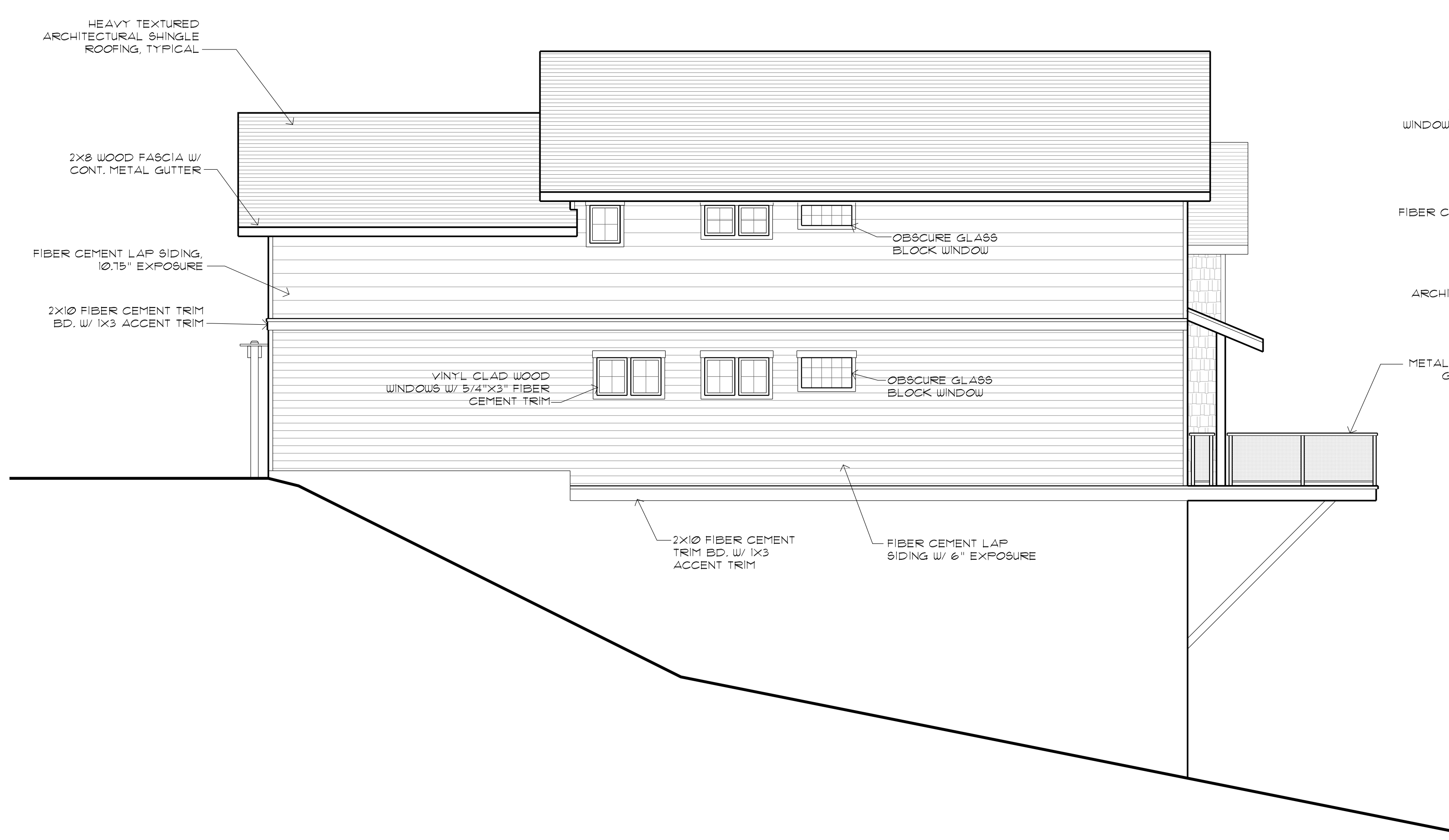
OWNER:
 TERRIE COX REVOCABLE LIVING TRUST
 16408 SE MILL PLAIN BLVD. VANCOUVER, WASHINGTON 98634

EXTERIOR ELEVATIONS
 HOUSE PLAN TYPE D

| | |
|----------|--------------|
| date: | MAY 21, 2019 |
| scale: | AS NOTED |
| drawn: | SAR |
| job no.: | 1709 |

LAND-USE APPLICATION 5/21/19

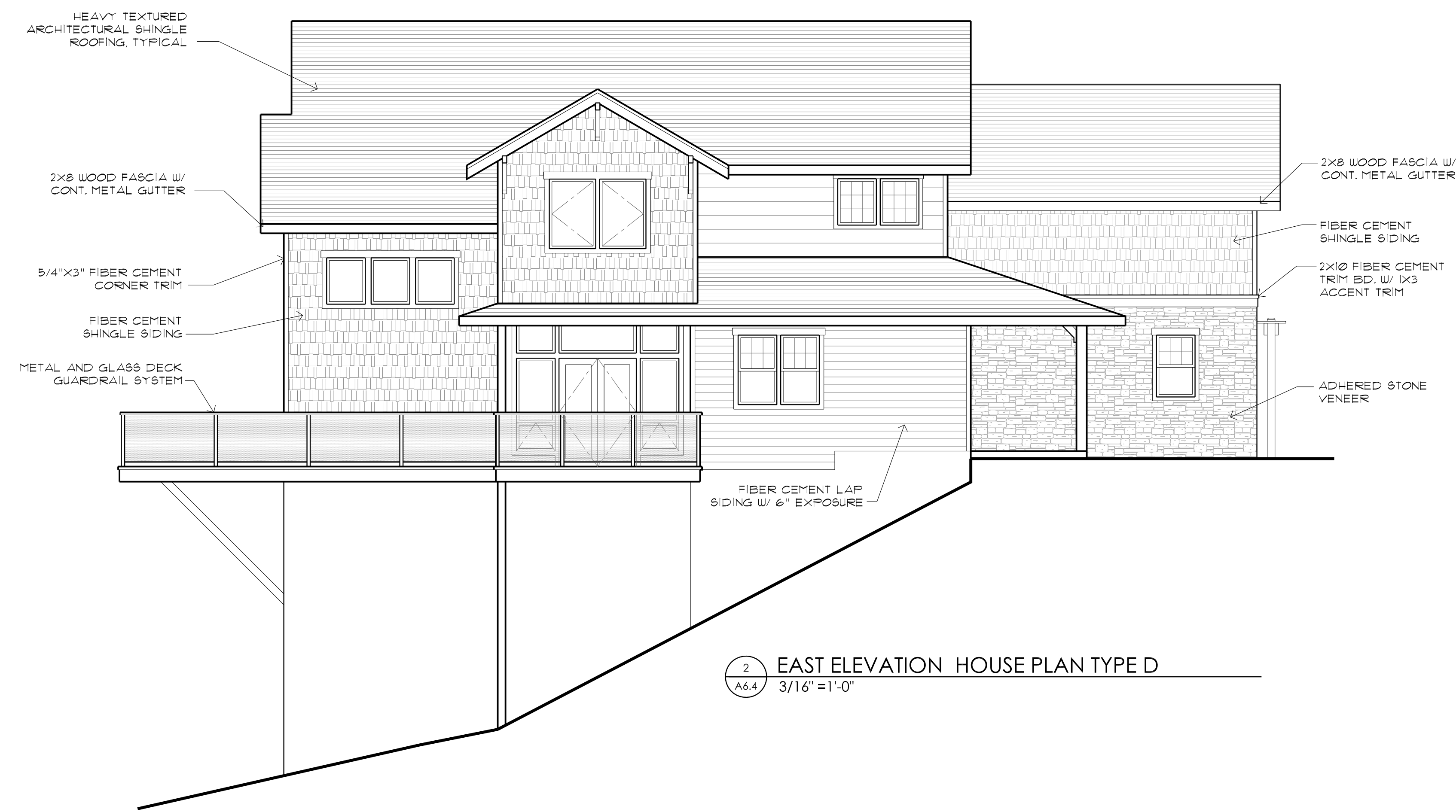
A
6.4



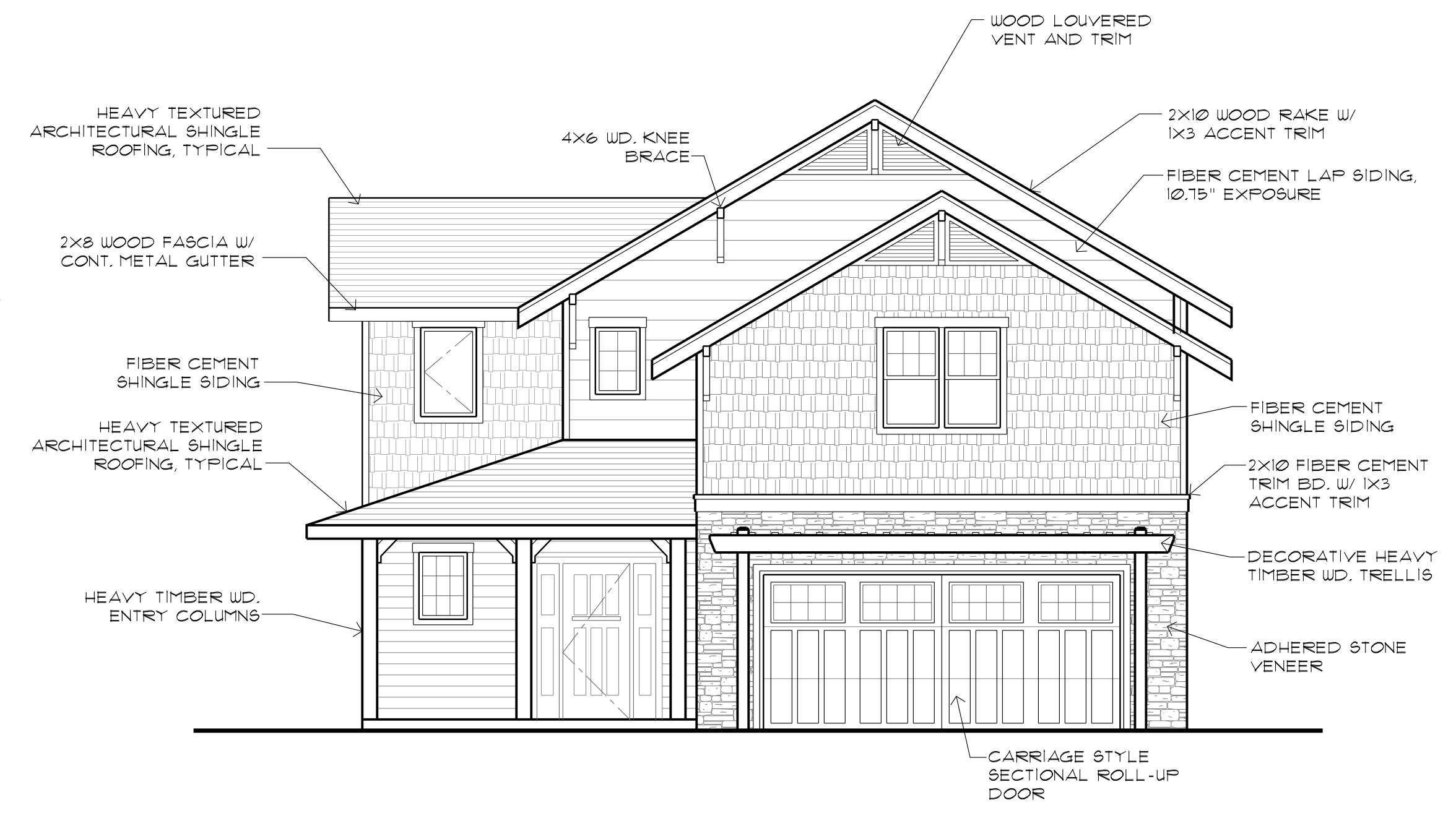
4 WEST ELEVATION HOUSE PLAN TYPE D
 A6.4 3/16" = 1'-0"



3 SOUTH ELEVATION HOUSE PLAN TYPE D
 A6.4 3/16" = 1'-0"



2 EAST ELEVATION HOUSE PLAN TYPE D
 A6.4 3/16" = 1'-0"



1 NORTH (STREET FRONT) ELEVATION HOUSE PLAN TYPE D
 A6.4 3/16" = 1'-0"