

**RDA**  
REITER DESIGN ARCHITECT  
INCORPORATED

7965 SW CIRRIUS DRIVE BEAVERTON, OREGON 97008 (503) 574-5056

**COLUMBIA RIVER HOMES DEVELOPMENT**  
3210 SW 6TH AVENUE CAMAS, WASHINGTON

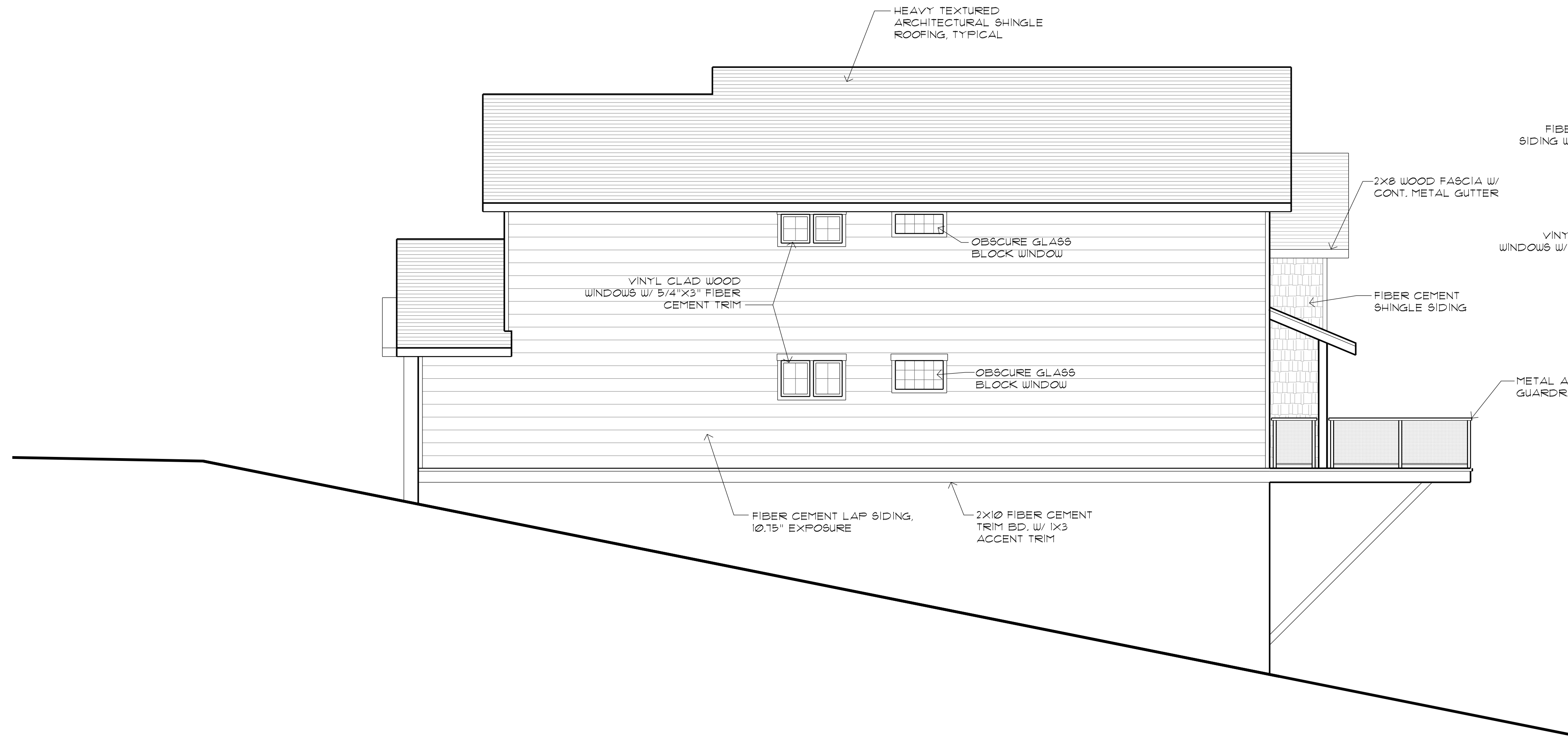
OWNER:  
**TERRIE COX REVOCABLE LIVING TRUST**  
16408 SE MILL PLAIN BLVD. VANCOUVER, WASHINGTON 98634

EXTERIOR ELEVATIONS  
HOUSE PLAN TYPE C

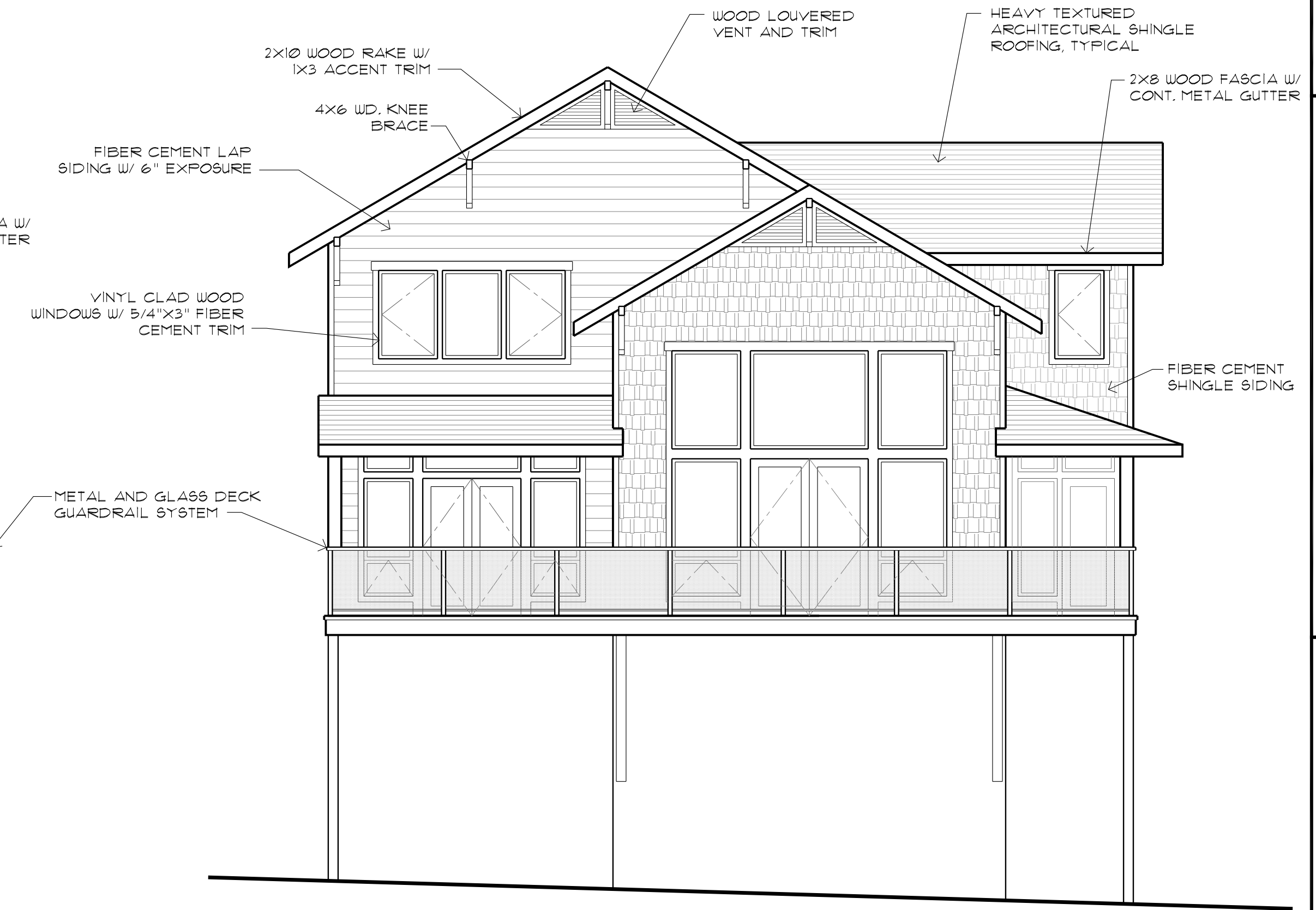
date:	MAY 21, 2019
scale:	AS NOTED
drawn:	SAR
job no.:	1709

LAND-USE APPLICATION 5/21/19

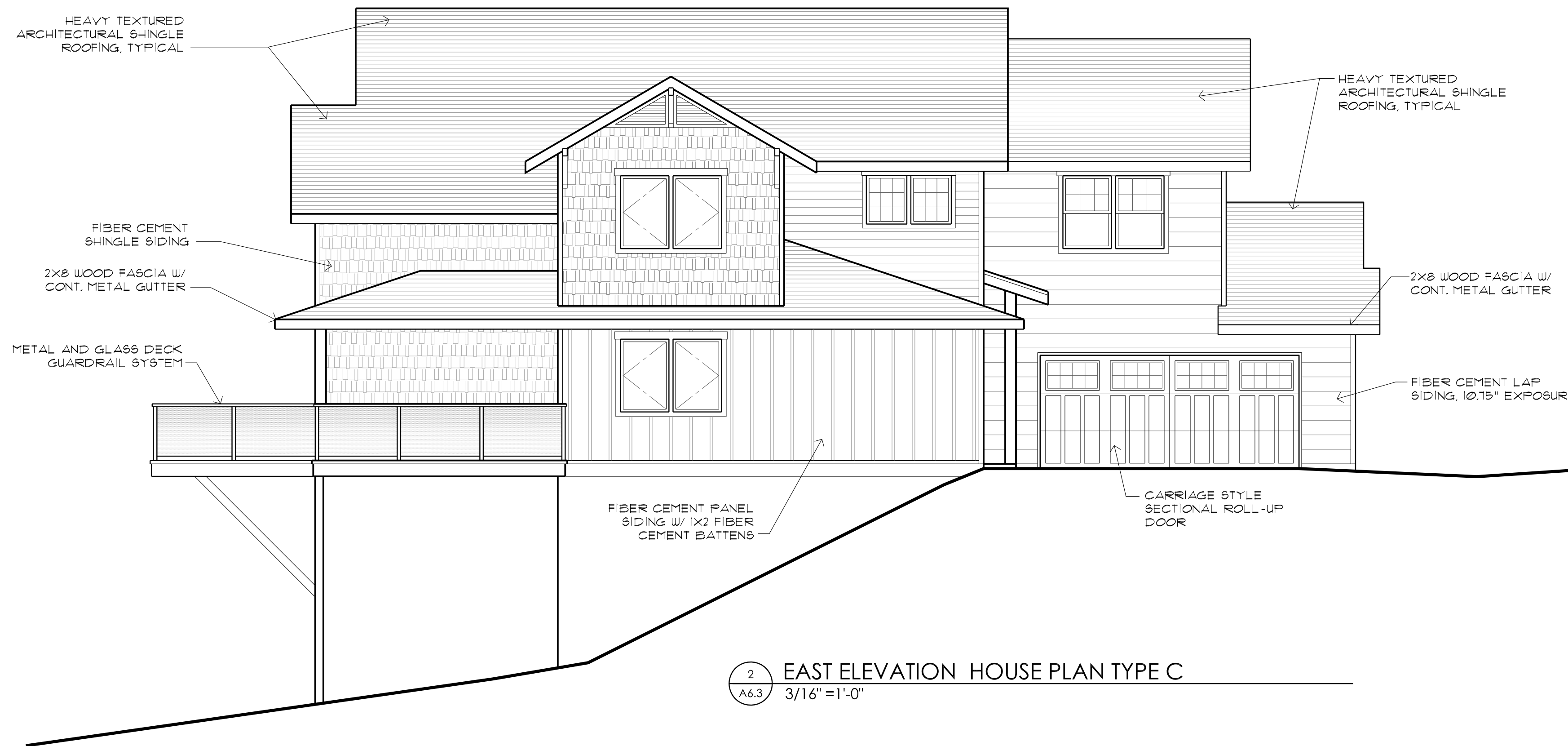
**A**  
**6.3**



4 WEST ELEVATION HOUSE PLAN TYPE C  
3/16" = 1'-0"



3 SOUTH ELEVATION HOUSE PLAN TYPE C  
3/16" = 1'-0"



2 EAST ELEVATION HOUSE PLAN TYPE C  
3/16" = 1'-0"



1 NORTH (STREET FRONT) ELEVATION HOUSE PLAN TYPE C  
3/16" = 1'-0"